

BENS Printserver as an SAP-certified OMS.

Suchy MIPS GmbH offers the BENS Printserver plugin "**BENS OMS/BC-XOM**" which transforms the server into an Output Management System for SAP systems. The BENS OMS system has been tested by SAP and has received the **SAP INTEGRATION CERTIFICATION**.

An external Output Management System (OMS) manages the print jobs created by an SAP system and reports their actual current status back to the SAP system.



Certificate SAP INTEGRATION CERTIFICATION

SAP SE hereby confirms that for the product **BENS OS 4.3** the interface software **BENS OMS/BC-XOM 1.0** of the company **Suchy MIPS GmbH** has been certified for integration with SAP NetWeaver 7.52 via the SAP integration scenario **BC-XOM 4.0**.

This certificate confirms the technical compliance of **BENS OS 4.3** with SAP certification procedures.

The certification test is documented in report no. **19226** and expires on **25.01.2025**

SAP Test System: SAP NetWeaver 7.52
Used Integration Tools: SAP NW RFC SDK 7.50

Certified Functions:

OMS Command-Line Interface Submit
OMS Polling Interface
OMS/XOM Callback Interface
OMS Operations Supplement
OMS/XOM Extension for Printer

Martin Vierling
Walldorf, 26.01.2022

SAP® Certified
Integration with SAP NetWeaver®

SAP certification focuses on technical integration with SAP solutions. Vendor is responsible for the product itself, its error-free operation, and adherence to applicable laws.



Certificate SAP INTEGRATION CERTIFICATION

SAP SE hereby confirms that the product **BENS OS 4.3** the interface software **BENS OMS/BC-XOM 2.0** of the company **Suchy MIPS GmbH** has been certified for integration with SAP S/4HANA via the SAP integration scenario **S/4-BC-XOM**.

This certificate confirms the technical compliance of **BENS OS 4.3** with SAP certification procedures.

The certification test is documented in report no. **22196** and expires on **27.02.2027**.

SAP Test System: SAP S/4HANA Foundation 2022
SAP Tools used: SAP NW RFC SDK 7.50 PL2

The certification is listed on the SAP Certified Solutions Directory: sap.com/csd.

Certified Functions:

OMS Command-Line Interface Submit
OMS Polling Interface
OMS/XOM Callback Interface
OMS Operations Supplement
OMS/XOM Extension for Printer

Walldorf, 27.02.2024

SAP® Certified
Integration with SAP® S/4HANA



SAP certification focuses on technical integration with SAP solutions. Vendor is responsible for the product itself, its error-free operation, and adherence to applicable laws.

Printing from SAP via the BENS Printserver.

Connection type "E": **External Output Management System.**

Connection type "E" applies to Output Management Systems. The BENS server has the necessary SAP certification. You can find out more about this on the following slides.

Spool Administration: Real Output Management System (Display)

OMS Description
Real OMS: ROMS1
Description: BENS ROMS1

OMS Attributes

Tasking	Job Status	Device Status	Output Types
<input checked="" type="checkbox"/> Command line <input type="checkbox"/> RFC Server	<input checked="" type="checkbox"/> Query <input checked="" type="checkbox"/> Deletable <input checked="" type="checkbox"/> Polling <input checked="" type="checkbox"/> Callback	<input checked="" type="checkbox"/> Queue query <input checked="" type="checkbox"/> Callback	<input type="checkbox"/> Fax

OMS Configuration: 192.168.11.146

SAP Configuration
Initialization Instance: vhcainplc_NPL_00
Initialization Command: /opt/bens/bin/bens-oms.pl start &Es "&E*" "&E4*" "&E3*"
Reconfiguration Request: 60 Sec ☐ Reconfiguration Required

4.3.3-r22259

BENS OS4

[+] Add Virtual Printer

Virtual Printers

ID	Name	Queue/Port	Type	SNMP Index	IOS-Printing	Status	Operations
2	C308	C308	lpr	3		(warning)	
5	ALU	ALU	lpr	6		(warning)	
6	AAA	pse	lpr	7		(ok)	
7	BBB	9555	socket	8		(ok)	

Spool Administration: Output Device (Display)

Output Device: C308 Short Name: C308

Device Attributes Access Method Output Attributes Tray Info

Host Spool Access Method: E: External output management system

Host Printer: C308
Host Name: vhcainplc

Logical OMS: callback LOMS

Query status through callback

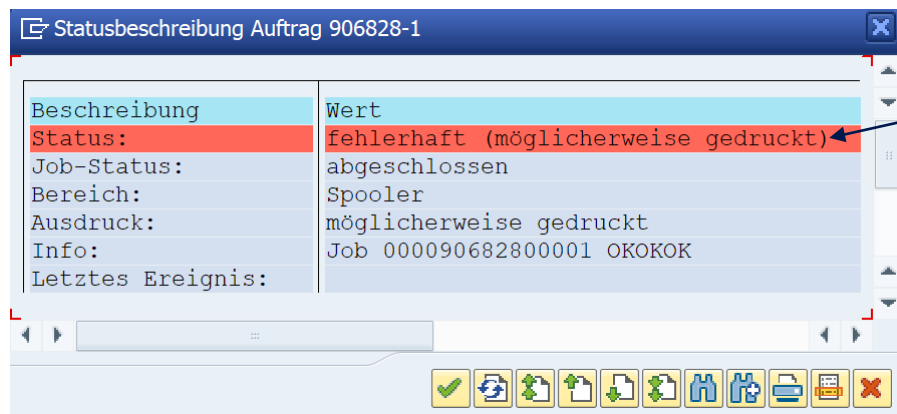
BENS Printserver as an SAP-certified OMS

What is an external Output Management System (OMS)?

The SAP spool system reports only a few statuses, such as "**Completed**" or "**Error**."

"**Completed**" does not necessarily mean that the job has actually been printed. It may simply mean that it was successfully transmitted to another server if that server has been defined as an intermediate target.

The error messages are often very vague, such as "**Incorrect, possibly printed**" providing little information about the actual status of the print job.



Spool-Auftrag Bearbeiten Springen Hilfsmittel Einstellungen System Hilfe

Ausgabesteuerung: Übersicht der Spool-Aufträge

Spool-Nr.	Ty	Mnd	Benutzer	Datum	Zeit	Status	Seiten	Titel
906828	800	SUCHYMIPS	08.11.2018	05:14	Fehler	1	LIST1S LP03 SAPMSPAD_SUC	
906822	800	SUCHYMIPS	07.11.2018	13:39	Fehler	1	LIST1S LP03 SAPMSPAD_SUC	
906821	800	SUCHYMIPS	07.11.2018	13:32	Fehler	1	LIST1S LP03 SAPMSPAD_SUC	
906820	800	SUCHYMIPS	07.11.2018	13:31	Fehler	1	LIST1S LP03 SAPMSPAD_SUC	
906819	800	SUCHYMIPS	07.11.2018	12:17	Fehler	1	LIST1S LP03 SAPMSPAD_SUC	
906818	800	SUCHYMIPS	07.11.2018	12:08	Fehler	1	LIST1S LP03 SAPMSPAD_SUC	
906817	800	SUCHYMIPS	07.11.2018	11:57	Fehler	1	LIST1S LP03 SAPMSPAD_SUC	
906816	800	SUCHYMIPS	07.11.2018	11:56	Fehler	1	LIST1S LP03 SAPMSPAD_SUC	
906774	800	CM DEMO_LP	06.11.2018	09:57	-	1	LIST1S LP01 ZCM_CPE_QUOT	
906772	800	SUCHYMIPS	06.11.2018	04:49	Fehler	1	LIST1S LP02 SAPMSPAD_SUC	
906770	800	SUCHYMIPS	06.11.2018	04:46	Fehler	1	LIST1S LP02 SAPMSPAD_SUC	
906768	800	SUCHYMIPS	06.11.2018	04:05	Fehler	1	LIST1S LP02 SAPMSPAD_SUC	
906766	800	SUCHYMIPS	06.11.2018	04:02	Fehler	1	LIST1S LP02 SAPMSPAD_SUC	
906764	800	SUCHYMIPS	06.11.2018	03:57	Fehler	1	LIST1S LP02 SAPMSPAD_SUC	
906762	800	SUCHYMIPS	06.11.2018	03:55	Fehler	1	LIST1S LP02 SAPMSPAD_SUC	
906760	800	SUCHYMIPS	06.11.2018	03:54	Fehler	1	LIST1S LP02 SAPMSPAD_SUC	
906758	800	SUCHYMIPS	06.11.2018	01:59	Fehler	1	LIST1S LP02 SAPMSPAD_SUC	
906710	800	SUCHYMIPS	30.10.2018	11:06	fertig	1	LIST1S UAC ZMBDA LABSUC	
906709	800	SUCHYMIPS	30.10.2018	09:02	fertig	1	LIST1S UAC ZMBDA LABSUC	
906707	800	SUCHYMIPS	15.10.2018	11:59	fertig	1	LIST1S UAC ZMBDA LABSUC	
906706	800	SUCHYMIPS	15.10.2018	11:59	fertig	1	LIST1S UAC ZMBDA LABSUC	
906705	800	SUCHYMIPS	15.10.2018	11:58	fertig	1	LIST1S UAC ZMBDA LABSUC	
906704	800	SUCHYMIPS	15.10.2018	11:57	-	1	LIST1S UAC ZMBDA LABSUC	
906703	800	SUCHYMIPS	13.10.2018	09:28	fertig	1	LIST1S WIN2 SAPMSPAD_SUC	
906702	800	SUCHYMIPS	13.10.2018	09:26	fertig	1	LIST1S TSTC SAPMSPAD_SUC	
906701	800	SUCHYMIPS	13.10.2018	09:23	fertig	1	LIST1S TSTC SAPMSPAD_SUC	
906630	800	SUCHYMIPS	10.10.2018	03:10	fertig	1	LIST1S WIN2 SAPMSPAD_SUC	
906629	800	SUCHYMIPS	08.10.2018	13:25	fertig	1	LIST1S WIN2 SAPMSPAD_SUC	
906623	800	CM DEMO_LP	06.10.2018	09:57	-	1	LIST1S LP01 ZCM_CPE_QUOT	

SAP

EH7 (1) 800 P1742ECC OVR

BENS Printserver as an SAP-certified OMS

What is an external Output Management System (OMS)?

The statuses reported back to the SAP spool system by the OMS are diverse and very precise. This way, the user can know whether their print job has actually been printed, temporarily stored, or, for example, deleted by the server.

The motto under which the OMS operates is:

Do what you do best and relieve the SAP system.



BENS Printserver as an SAP-certified OMS

According to which standard was "BENS OMS/BC-XOM" implemented?

The standard for the implementation of the "BENS OMS/BC-XOM" plugin is called "**BC-XOM**"

BC-XOM is a standardized communication interface defined by SAP. It is used for data transmission and communication between an SAP system and an external Output Management System (OMS).

SAP states literally:

"BC-XOM provides external output management systems (OMS) with an open, generic interface to the SAP NetWeaver, SAP ERP and SAP S/4HANA spool system, enabling you to couple the SAP spool system to an OMS".



BENS Printserver as an SAP-certified OMS

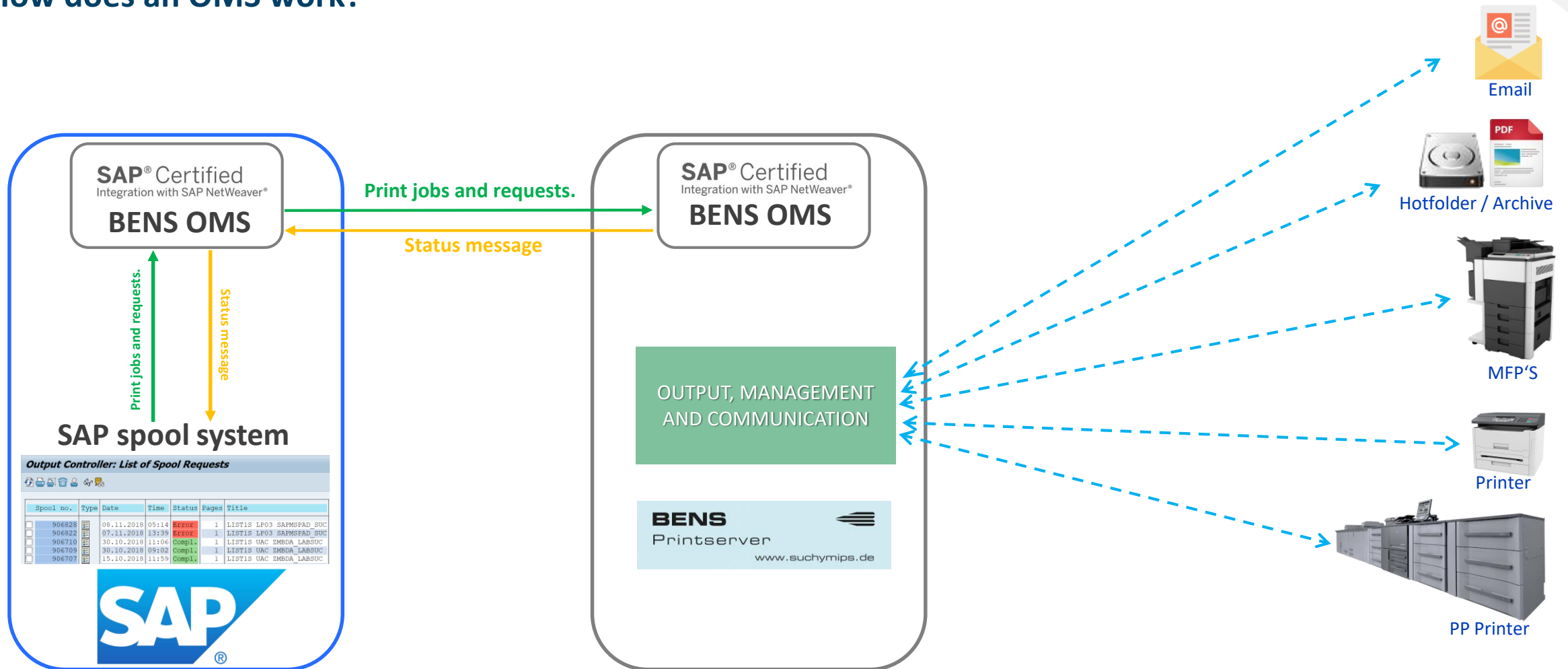
How does an OMS work?

- The BENS OMS/BC-XOM interface is installed on the SAP systems and on the BENS Printserver.
- The SAP system sends print jobs and requests to the BENS OMS/BC-XOM interface on the SAP server.
- The BENS OMS/BC-XOM interface on the SAP server forwards the print jobs and requests to the BENS OMS/BC-XOM interface on the BENS Printserver.
- The BENS Printserver manages the submitted print jobs, communicates with output devices, and returns status reports to the BENS OMS/BC-XOM interface on the SAP server.
- The BENS OMS/BC-XOM interface on the SAP server sends the received reports to the SAP spool system.



BENS Printserver as an SAP-certified OMS

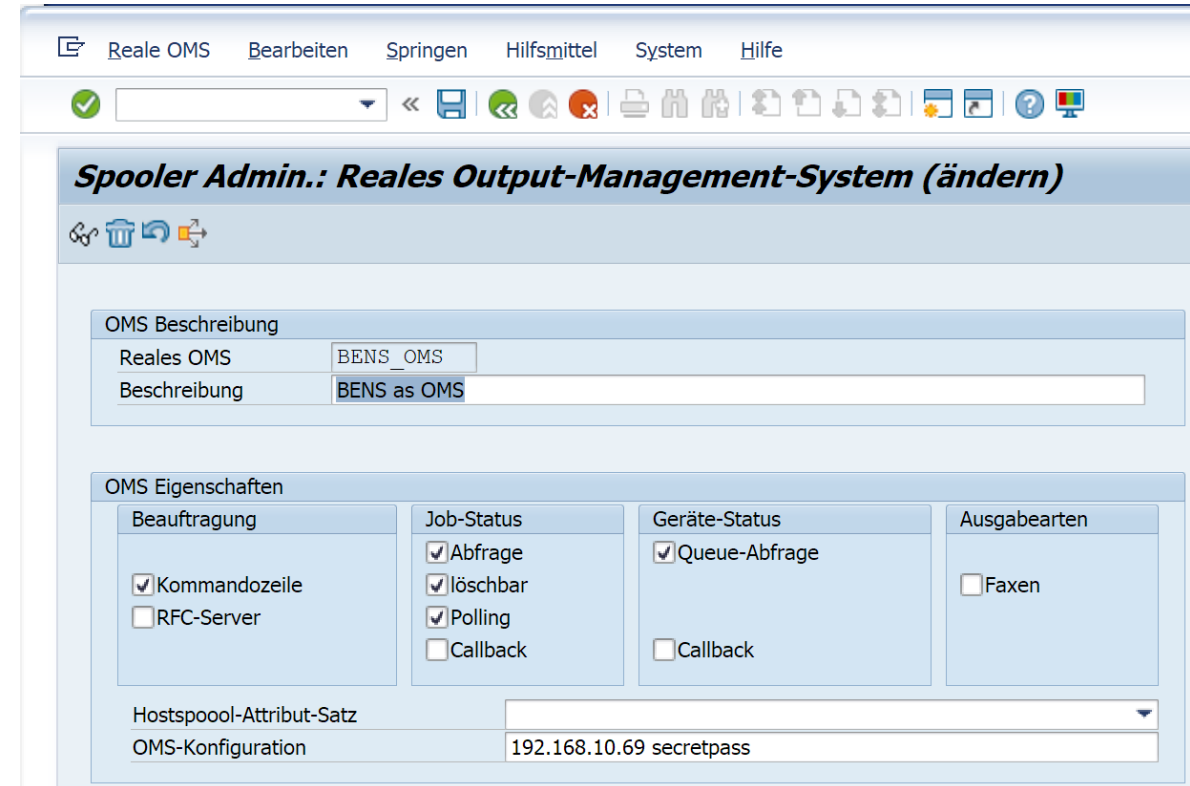
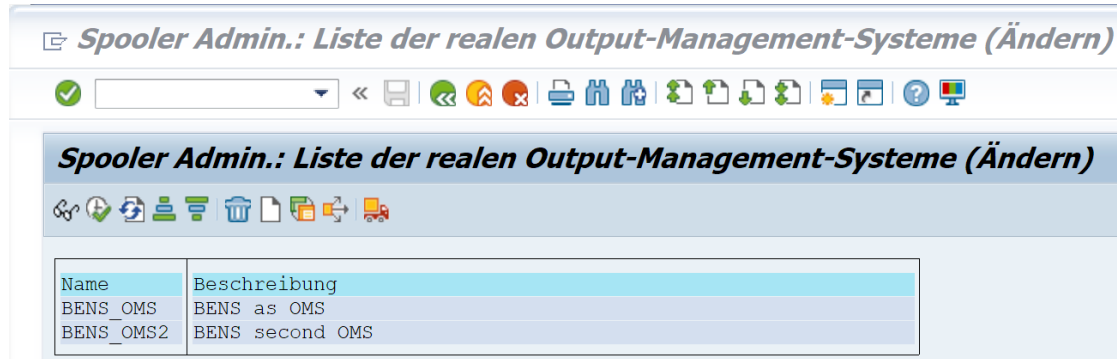
How does an OMS work?



BENS Printserver as an SAP-certified OMS

What is a ROMS?

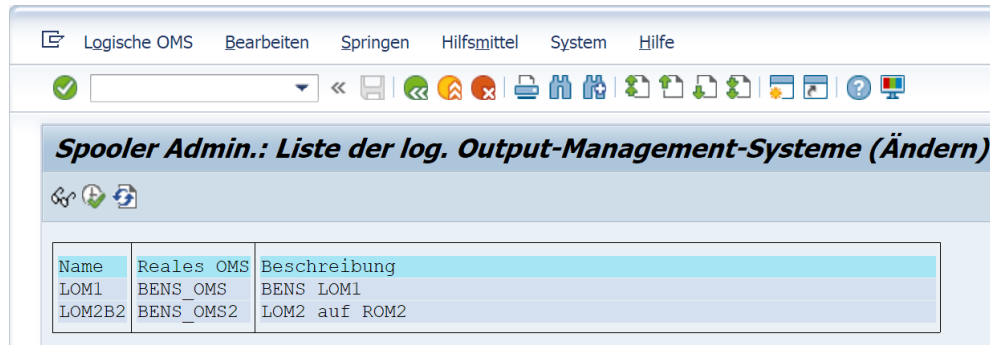
- To use an OMS, at least one ROMS (Real Output Management System) must be defined in the SAP system using the transaction SPAD.
- The ROMS is a definition of a real (physical) Output Management System. The ROMS definition specifies the properties of the external OMS for the SAP system.



BENS Printserver as an SAP-certified OMS

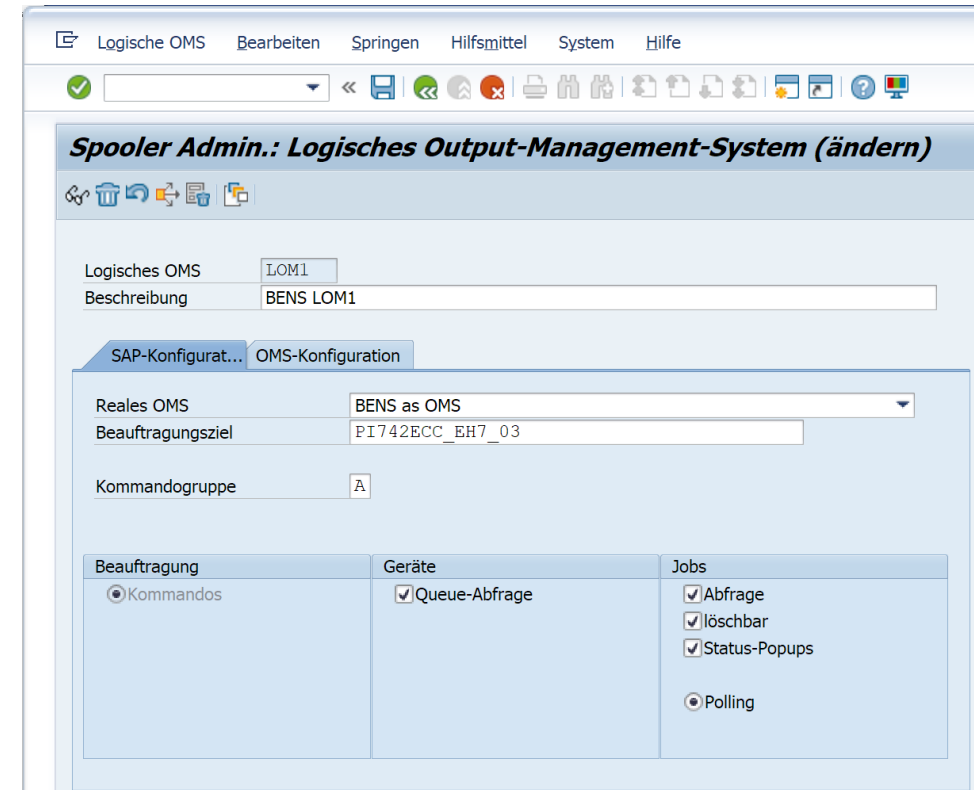
What is a LOMS?

- For each ROM, at least one LOMS (Logical Output Management System) must be defined in the SAP system using the transaction SPAD.
- LOMS allows output devices to be grouped into logical or functional groups.



Spooler Admin.: Liste der log. Output-Management-Systeme (Ändern)

Name	Reales OMS	Beschreibung
LOM1	BENS_OMS	BENS LOM1
LOM2B2	BENS_OMS2	LOM2 auf ROM2



Spooler Admin.: Logisches Output-Management-System (ändern)

Logisches OMS: LOM1
Beschreibung: BENS LOM1

SAP-Konfigur... OMS-Konfiguration

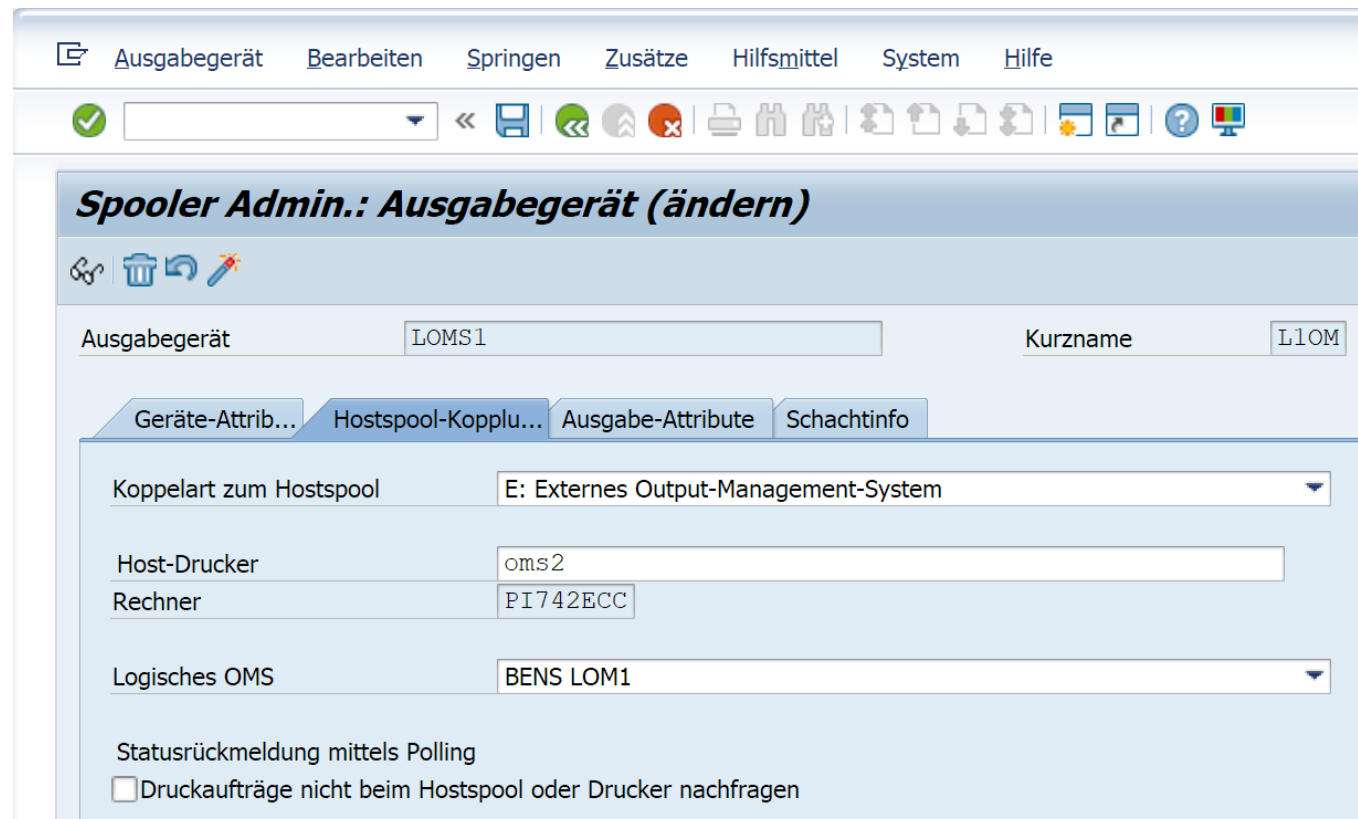
Reales OMS: BENS as OMS
Beauftragungsziel: PI742ECC_EH7_03
Kommandogruppe: A

Beauftragung	Geräte	Jobs
<input checked="" type="radio"/> Kommandos	<input checked="" type="checkbox"/> Queue-Abfrage	<input checked="" type="checkbox"/> Abfrage <input checked="" type="checkbox"/> löschar <input checked="" type="checkbox"/> Status-Popups
		<input checked="" type="radio"/> Polling

BENS Printserver as an SAP-certified OMS

How are print jobs sent to an OMS?

- To output print jobs to a printer defined in the OMS, the printers designated for this purpose in the SAP system must be created with the so-called connection type "E: External Output Management System."



Spooler Admin.: Ausgabegerät (ändern)

Ausgabegerät: LOMS1 Kurzname: L1OM

Geräte-Attrib... Hostspool-Kopplu... **Ausgabe-Attribute** Schachtinfo

Koppelart zum Hostspool: E: Externes Output-Management-System

Host-Drucker: oms2

Rechner: PI742ECC

Logisches OMS: BENS LOM1

Statusrückmeldung mittels Polling
☐ Druckaufträge nicht beim Hostspool oder Drucker nachfragen

BENS Printserver as an SAP-certified OMS

How is BENS OMS/BC-XOM licensed?

BENS OMS/BC-XOM Starter Package

- This is the initial license package for 1 SAP system and 1 BENS Printserver.
- It includes licenses for the BC-XOM interface (plugin) for one SAP system and for one BENS Printserver.
- It includes licenses for 25 output devices.



BENS OMS/BC-XOM Extended Package

- The extended package is aimed at customers who have already installed a BENS OMS/BC-XOM Starter Package.
- Each extended package includes a license for 25 output devices.



BENS Printserver as an SAP-certified OMS

What is the OMS/XOM Extension for printers?

- The OMS/XOM Extension for Printer is an additional option that allows the management of printers outside the SAP system through a BENS web application. The management includes creating, deleting, and modifying ROMs, LOMs, and printers.
- The person authorized to operate this extension does not need to have knowledge required for managing ROMs, LOMs, and printers directly in the SAP system.

BENS Printserver as an SAP-certified OMS

Benefits of using the BENS Printserver as an OMS.

- With the certified SAP BC-XOM interface, the BENS OMS offers secure, consistent, and bidirectional communication between the SAP application and the printers.
- The SAP system is relieved of its workload. The BENS Printserver, as an external OMS, manages the print jobs and communication with the printers and the SAP system. Only changes in the status of print jobs are sent to the SAP system.
- Optional barcode, form, and other modules for workflow automation are available through the BENS Printserver.
- Print jobs from the SAP system can optionally be transmitted encrypted from the SAP system to the end output device.

