



Suchy **MIPS**

<http://www.suchymips.de>

BENS G3

PCL Unicode Filter

Manual

Suchy MIPS



Release April 2011

© Copyright 2005-2011 Suchy MIPS, Munich. All rights reserved.

This documentation is intended for information purposes only and may be subject to change at any time without prior notice.

Suchy MIPS assumes no liability for damages incurred directly or indirectly from errors, omissions or discrepancies between the product and this manual. This booklet is copyrighted by Suchy MIPS with all rights reserved. No part of it may be reproduced, stored in a retrieval system or transmitted in any form or by any means, electronic, mechanical, photocopying, microfilming, recording or otherwise without written permission from Suchy MIPS.

BENS is the intellectual property of Suchy MIPS.

Microsoft and MS Windows are registered trademarks of Microsoft Corporation, Inc.

SAP is a registered trademark of SAP AG.

PCL, PJL and HP-GL are registered trademarks of the Hewlett-Packard Company.

Contents

1	Introduction.....	4
2	Installation of the PCL Unicode Filter.....	5
3	Assigning of the PCL Unicode filter to a virtual printer.....	6
4	Configuration file for the Unicode filter.....	7

1 Introduction

The **BENS G3** PCL Unicode Filter is a filter which allows to print Unicode data on non-unicode enabled printers. Furthermore it can be used to print Unicode data, which are enabled for printing of unicode data, but have not the required Unicode fonts. The Suchy MISP Unicode Filter is compatible to the Unicode Printing Solution of SAP[®], Hewlett Packard[®], Lexmark[®] and so on. It provides users with the font Andale, which includes over 60.000 characters and enables printing in different languages like chinese, japanese, cyrillic and so on.

2 Installation of the PCL Unicode Filter

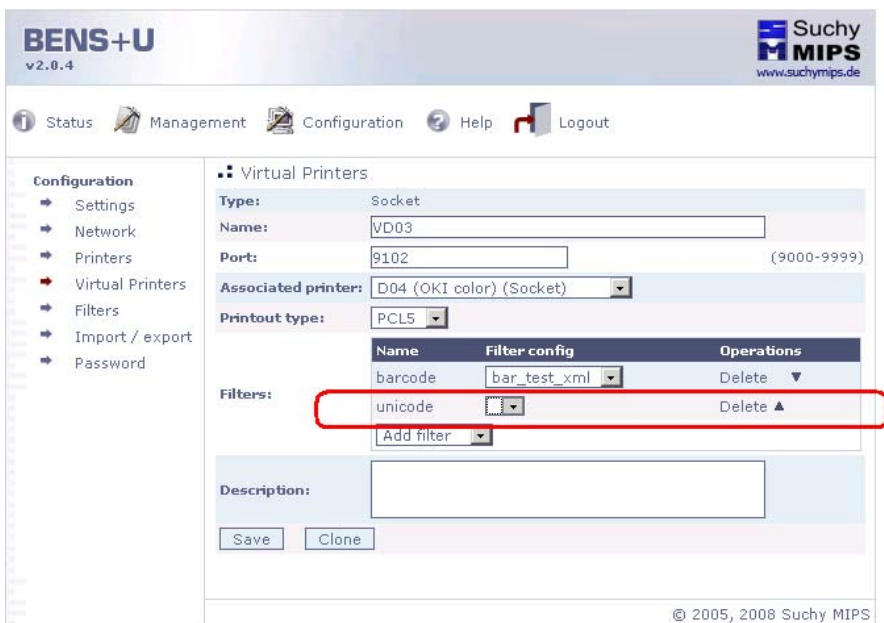
To install the PCL Barcode Filter on **BENS G3**, choose **Configuration/Filters** and click on **Add Filters** in order to upload the filter. Afterwards, upload the licence choosing **Management/Licences**. Click on **Explore**, select the licensed file and click on **Import licence file**. Finally assign the filter to a virtual printer. For more details refer to the manual of **BENS G3**.

Note: *Assigning a filter to a virtual printer consumes one licence. The number of available licences can be checked using **Configuration/Filters**. The used and available licences are displayed in the "Virtual Printers" line.*

3 Assigning of the PCL Unicode Filter to a virtual printer

The Unicode filter acts if it were assigned to a virtual printer. To assign this filter to a virtual printer, proceed as follows:

- Choose **Configuration/Virtual Printers**.
- Click on the name of the virtual printer to which the filter has to be assigned.
- Click **Add filter** and select **Unicode**.
- The Unicode filter appears in the list of active filters assigned to the selected virtual printer.



4 Configuration file for the Unicode Filter

At the present time, the Unicode filter does not use a configuration. If one should be needed in the future, it could be uploaded with existing tools. The handling is the same as with the barcode configuration (uploading, assigning, updating, deleting).